

Eton House
International School

Welcome to

Eton House

International School @ Orchard

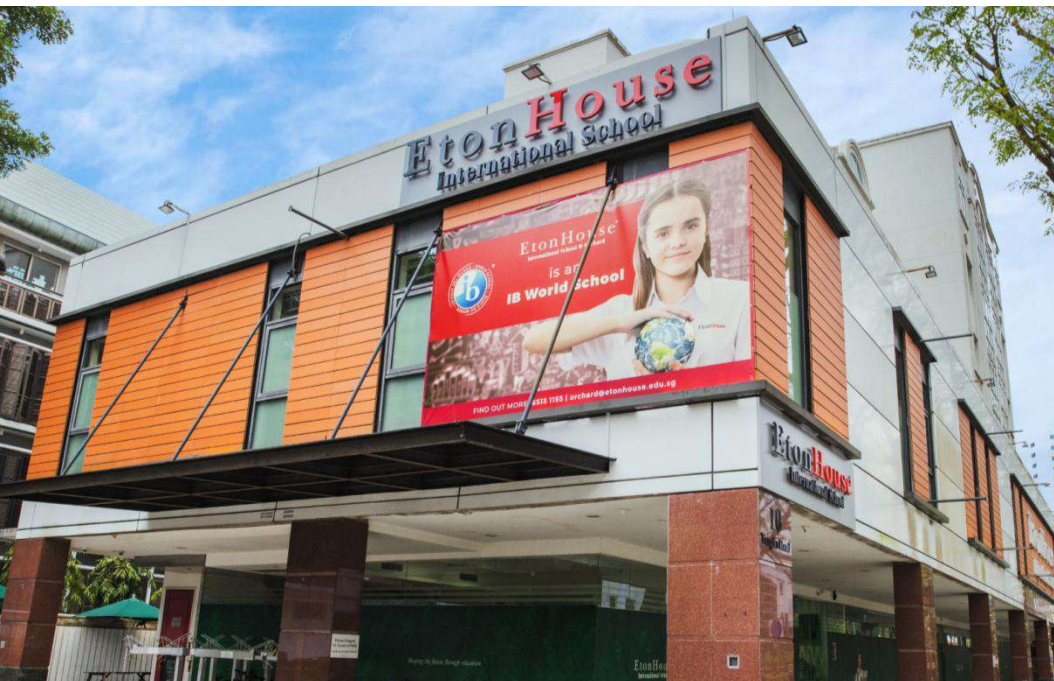


Eton House
International School



ABOUT US at EtonHouse Orchard

- ✓ Over 230 students, over 35 nationalities
- ✓ Qualified international teachers
- ✓ Primary → Secondary → High School
- ✓ IBPYP → IGCSEs → International A Levels
- ✓ Foreign languages: Mandarin, Japanese, Spanish



ABOUT ETONHOUSE



25,000

Students across 100 schools, 9 countries

28

Years of track record

IB, IGCSE & IALs

9 IB World Schools with internationally recognised programmes

EduTrust registered

A quality assurance scheme administered and governed by the CPE/SSG for PEIs in Singapore.

LEARNING PATHWAY WITH ETONHOUSE

PRE-NURSERY TO YEAR 13 (18mths - 18 years)

* Pre-School education available at 13 other campuses islandwide



 **Cambridge Assessment
International Education**
Cambridge International School

 **Pearson
Edexcel**



Pre-School* & Primary
Inquire.Think.Learn Curriculum
IB Primary Years Programme



Secondary
UK Key Stage 3
IGCSEs



High School
International A Level
Programme

School Principal



Robert Randall
Principal

Robert brings with him 25 years of educational experience in both the UK and Singapore. He joins us from Tanglin Trust School, Singapore where for the past 14 years he has successfully held several senior leadership positions including the Head of Sixth Form and Assistant Head. He was previously the Deputy Headteacher responsible for all academic matters in Tanglin Trust Senior School.

With his stellar track record and extensive experience in both pastoral and academic matters, we are confident that Robert has the skills to effectively lead the school into its next stage of development. His knowledge of international education within Singapore will prove a tremendous asset as we move forward. Robert also brings with him leadership experience in a top school in London prior to joining Tanglin Trust.

His educational philosophy is clearly aligned with our ethos and values, and we are very excited about his appointment. He has a strong belief that a successful school should be a happy and thriving learning community where each child is provided with the opportunity to flourish and be the very best they can be.

Orchard Leadership Team



Mike Carrigan
Head of Primary
Years



Sean McGeough
Middle School Coordinator



Philip Gray
Upper School
Coordinator



Emma Caunt
Sixth-Form Coordinator



Ann Richardson
Head of Inclusive
Education

Orchard Team



Juliana Wong
Operations Supervisor



Cheryl Tong
Parent Liaison Manager



Marissa Ng
Senior Parent Liaison
Executive



Diane Lim
Customer Relations
Executive



Sarah Teo
Customer Relations
Executive

EtonHouse Orchard: www.etonhouse.edu.sg/orchard
Book a Tour: <https://info.etonhouse.edu.sg/orchard-bookatour>

Email: orchard@etonhouse.edu.sg
Admissions Enquiries: +65 6513 1155



VISION

Shaping the future through education

MISSION

Developing confident and capable global citizens



OUR CORE VALUES

- Integrity (principles, respect)
- Value adding
- Compassion (care)
- Innovation (risk taking, creativity)
- Global Citizenship (responsible citizenship)

TEACHERS

Teaching staff from a diverse mix of nationalities

Consists of Homeroom, Assistant, Mentor, Specialist & IE Teachers

LANGUAGES

An outstanding language programme – Mandarin, Spanish, Japanese, EAL (standard and intensive)

**please check which language offers foreign/native option and at which year group*

INCLUSIVE EDUCATION

We are committed to providing the most personalized and inclusive education to our diverse community which currently consist of over 35 nationalities



SPORTS PROGRAMME

The sports programme at EtonHouse International School, Orchard is as unique as the school itself.

With a focus on fitness and stamina training, competitive sports, values and health education, students have opportunities in football, netball, rugby as well as strength and fitness training in the form of TRX, bouldering, X-Fit, gymnastics, yoga and more.



CULTURE & COMMUNITY

Strong pastoral care that nurtures personal skills

Boutique school with a strong sense of community;

A safe, close-knit and happy environment



ACADEMIC ENRICHMENT & HOLISTIC EDUCATION

- An all-through school is a school that comprises multiple phases of education (usually primary and secondary) in a single institution.
- The alignment of the primary and secondary timetables for this academic year has enabled us to create a whole school 'Enrichment hour' from 1100 to 1200 on a Wednesday morning.
- All students and teachers are available and groups are created based upon interest and passions rather than age or year group. There are numerous benefits and opportunities to the students of this time; student to student mentoring, the provision of excellent role models for younger students, leadership and mentoring opportunities to develop confidence and character and an overwhelming sense of community and family.
- Opportunities also exist for primary children to learn in specialist facilities (laboratories) on a regular basis. The core aim is for older students to teach and lead the younger children in a range of academic enrichment activities.



ENRICHED PHYSICS



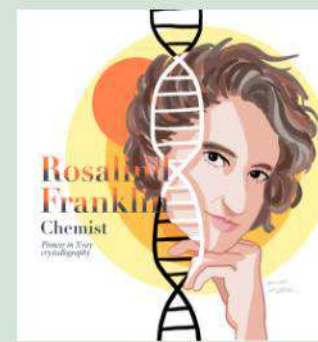
YOUNG BUSINESS BUILDERS



THE PATH TO WELL-BEING



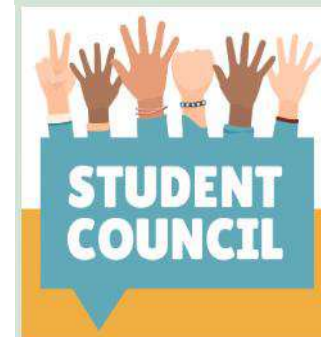
JUNIOR CHEFS: COOKING, CULTURE AND NUTRITION



THE ROSALIND FRANKLIN



CREATIVE WRITING FOR BEGINNERS: BRINGING YOUR STORY TO LIFE



LEADERSHIP AND COMMUNITY ACTIVISM: STUDENT COUNCIL



TEAM GREEN: ENVIRONMENTAL SUSTAINABILITY SOCIETY



HEALTH HEROES: HEALTH WEEK PLANNING COMMUNITY

IB PYP – PRIMARY



- Inquiry-based and concept driven international education
- Focuses on the holistic development of the child (rigorous academics and soft skills)
- Integrated learning covering subject areas including Languages, Mathematics, Visual Arts and Design and Technology, Music, Social Studies, Science, Information Communication Technology, Personal, Social and Physical Education through 6 different transdisciplinary themes
- IB learner profile as guiding culture intended to promote lifelong, resilient and confident learners :
 - ✓ Caring
 - ✓ Knowledgeable
 - ✓ Open-minded
 - ✓ Inquirers
 - ✓ Principled
 - ✓ Communicators
 - ✓ Thinkers
 - ✓ Reflective
 - ✓ Courageous
 - ✓ Balanced

MIDDLE TO UPPER SECONDARY



- In Year 7-9, we consider them as transition years where students build upon the inquiry-based PYP approach in incorporating Project Based Learning into our curriculum
- Provides students with an opportunity to study a breadth of academically rigorous topics and subjects, while also building the skill sets needed to build the pathway to academic success in IGCSE and A-Levels
- Upon completion of the IGCSE, the qualification obtained is recognised globally by universities and employers around the world
**IGCSE English Language qualifications are recognised by UK universities*
- Flexible and stimulating curriculum that can be built around the students' specific needs to develop skills
*(consists of **core & elective** subjects – chosen in Y10)*

IGCSEs – UPPER SECONDARY



- Offers IGCSE courses for Years 10 and 11 (ages 14 to 16) which lead to International General Certificate of Secondary Education qualifications.
- Students who take an IGCSE subject will be gaining a qualification that is recognised globally.
- The IGCSE curriculum offers a variety of routes for learners with a wide range of abilities, including those whose first language is not English.
- Flexible and stimulating curriculum that can be built around the students' specific needs to develop skills (*consists of **core** & **elective** subjects – chosen in Y10*)

**Please note that the Options available is subject to change every academic year*

INTERNATIONAL A LEVEL – HIGH SCHOOL



- Offered to students ages 16 to 18 at international schools globally by Cambridge International Examinations and Pearson Edexcel
- Internationally recognised qualifications equivalent to British A-Levels, the standardised academic examinations taken in the United Kingdom
- Designed to prepare our students for the increased expectations of universities and employers, developing a required range of skills and experiences
- Students are expected to develop as confident young adults who can take responsibility, be accountable, develop high- levels of self-esteem and confidence, and have the ability to set and meet personal targets
- For more information related to programme information and options, kindly refer here:

<https://sites.google.com/etonhouse.edu.sg/sixth-form/home?pli=1>

Other Information

ACADEMIC CALENDAR

Start = August

End = June

Consists of 4 Terms, 2 Semesters

Semester 1, Term 1 (Aug-Oct) & 2 (Oct-Dec)

Semester 2, Term 3 (Jan-Mar) & 4 (Apr-Jun)

CLASS SIZES

Smaller class sizes to provide more time for *small group learning time* and *personalised education*

Single-form classes i.e. only 1-2 classes per year group

Homeroom Tutors for **Primary**

Form Tutors for **Secondary & High School**

SCHOOL HOURS

8.30am – 3.30pm for **Primary** (one play break daily, 12-12.45pm lunchtime)

8.30am – 3.45pm for **Secondary & High School** *8.30am for Registration (1-1.45pm lunchtime)

SIGN IN – VISITOR LOG

All visitors to please sign in at Level 1 reception

COMMUNICATION PORTAL

- Primary – SeeSaw and email
- Secondary – Managebac and email
- Bi-Weekly Newsletter

LUNCH TIME OFF CAMPUS FORM

For Year 9 and above only, please approach reception for more details

LEAVE CAMPUS CONSENT WAIVER FORM

For Year 4 to Year 6 only, students will require this form to be completed in order to leave the school unaccompanied, please approach reception for more details

SCHOOL MEAL REQUEST

For new school meal sign up or school meal withdrawal request, please approach reception for more details

ALLERGIES/DIETRIES CONSTRAINTS

Please clearly inform your homeroom tutors and reception. Please note that EtonHouse International School is a Nut, Beef, Pork and Lard safe school, please do not bring any products containing the mentioned items into campus. For more information, please approach reception

SAFEGUARDING

For any safeguarding related matters, kindly reach out to our leadership team/safeguarding officer for assistance

Committee for Private Education (CPE)

- EtonHouse International School Pte Ltd - registered with Committee for Private Education
- Private Education Act. CPE is under SkillsFuture Singapore (SSG) to regulate the local private education industry.

Ref: <https://www.skillsfuture.gov.sg/pei>

- 4 year EduTrust certificate – Student Pass Holders
- Immigration and Checkpoints Authority (ICA) Student Pass
 - Study
 - Parent/Guardian
 - No extension to stay and give up pass within 7 days
 - Attendance: school is obliged to report 7 days of absence or month when <90% attendance



For any feedback related to your children's education, please feel free to

CONTACT US

EtonHouse Orchard:

www.etonhouse.edu.sg/orchard

Email: orchard@etonhouse.edu.sg

Call Us: +65 6513 1155

EtonHouse® International School



Shaping the future through education